

Please rate this document after reviewing at the bottom of this page.

## REPLACEMENT

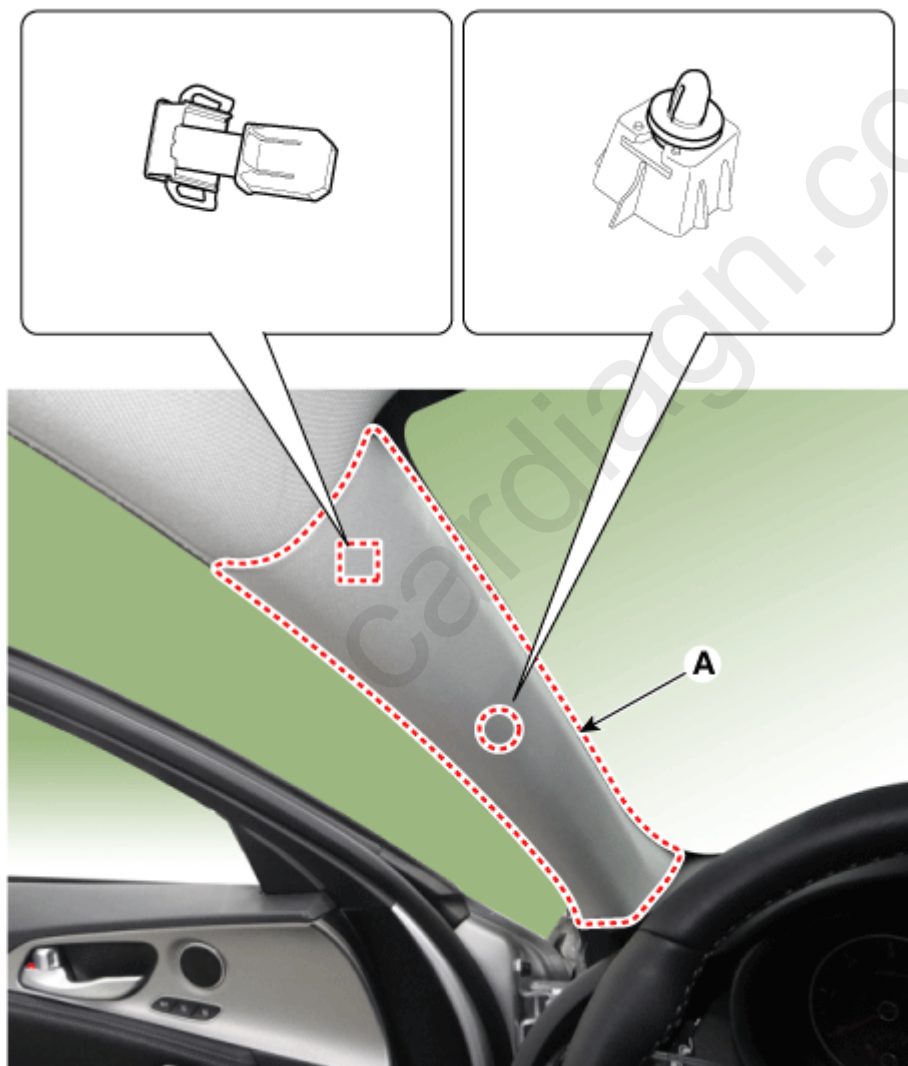
### ⚠ CAUTION

Put on gloves to protect your hands.

### i Information

- Use a plastic panel removal tool to remove interior trim pieces without marring the surface.
- Take care not to bend or scratch the trim and panels.

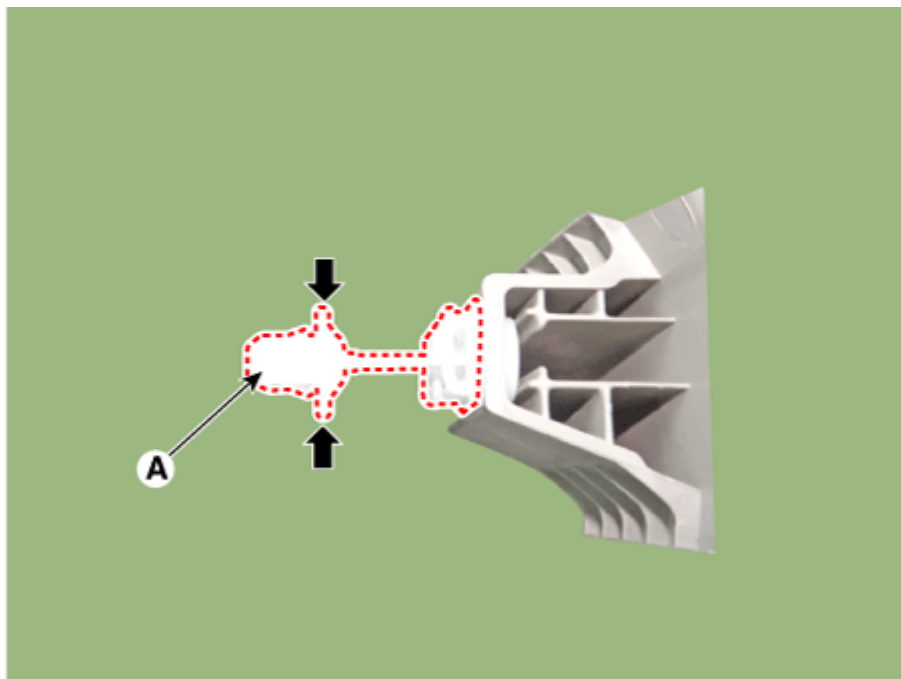
1. Separate the pillar trim and then remove the front pillar trim (A) by pushing the mounting clip in the direction of the arrow.



2. Install in the reverse order of removal.

### i Information

- Replace any damaged clips.
- Once the front pillar trim has been removed, replace the clip (A) with new ones.



\* Thanks for your cooperation for the more quality. Please surely rate this document before closing.

cardiagn.com